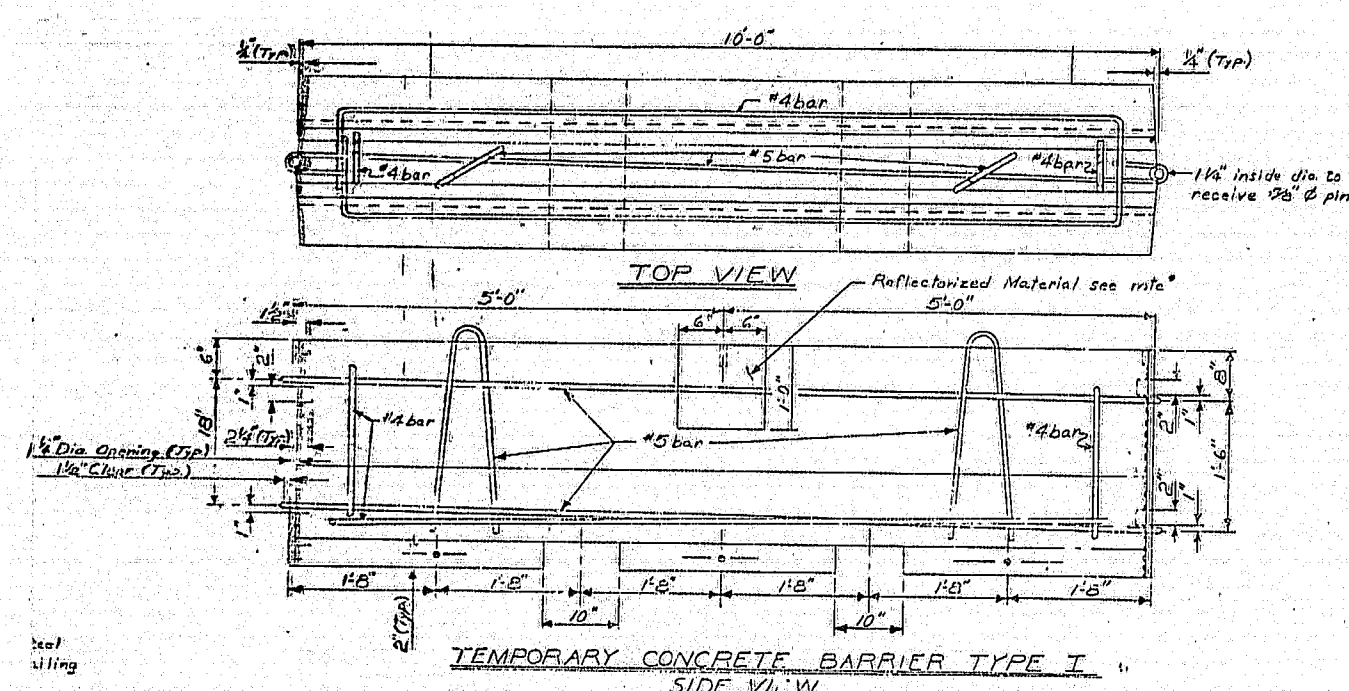
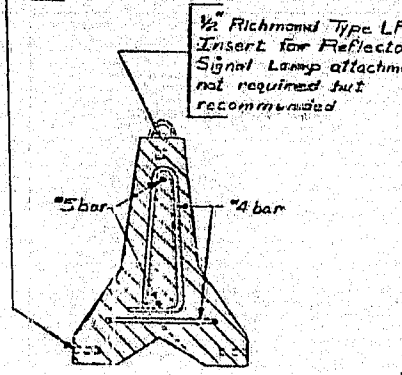


GUARD RAIL POST SPACING DETAIL

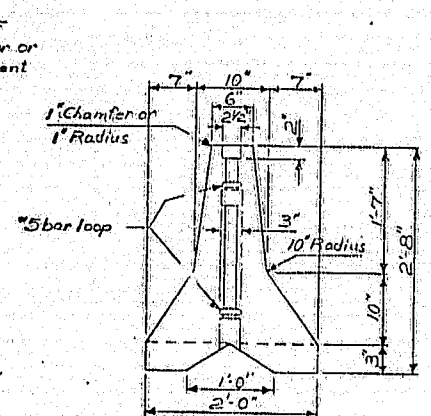


TEMPORARY CONCRETE BARRIER TYPE I

Note: Richmond Type EC-2P Insert for attaching units to bridge abutts. 3 each side of unit (6 per unit). Attachment to bridge abutts not to be allowed on Traffic side of barrier. Only in attachment assembly shall be approved by the Engineer to specify the strength of base. E.C. Richmond EC-2P Inserts.

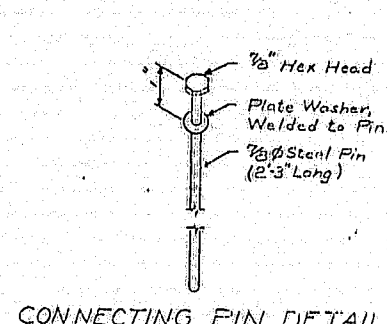


TYPICAL SECTION



TYPICAL END VIEW

Note: Yellow Reflective Plastic Pavement Marking Material on every other Temporary Barrier Section. (20' spacing for Reflective Material) Payment to be considered incidental to Item 526.30.



CONNECTING PIN DETAIL

MATERIALS

CONCRETE: ALL CONCRETE CLASS A.
REINFORCING STEEL: A.S.T.M. A615, GRADE 60.
H.S. BOLTS: A.S.T.M. A325, TYPE 2.

BASIC ALLOWABLE STRESSES

CONCRETE $F_c = 1200$ PSI, $N = 9$
REINFORCING STEEL $F_s = 24,000$ PSI.
STRUCTURAL STEEL A325 $F_t = 13,500$ PSI.

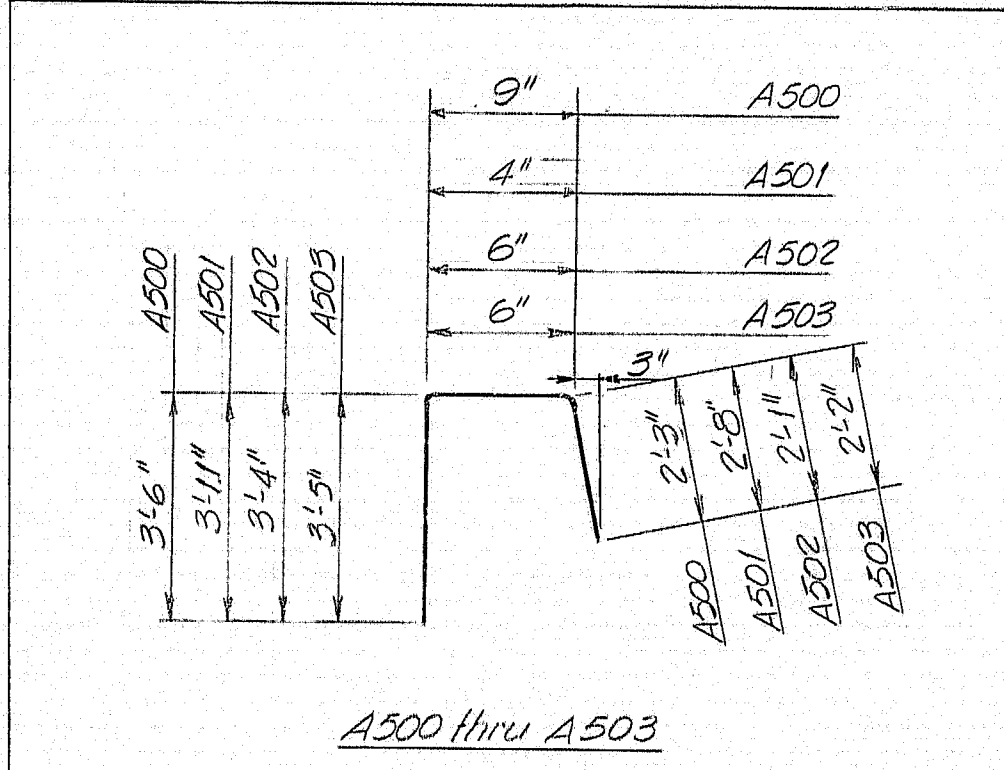
REINFORCING STEEL SCHEDULE STRAIGHT BARS

MARK	NO	LENGTH	LOCATION
A504	7	31'-9"	Upstream Barrier
A505	45	2'-4"	Upstream & Downstream Barriers
A506	7	32'-7"	Downstream Barrier
A507	45	2'-6"	Upstream & Downstream Barriers

BENT BARS

A500	33	6'-6"	Upstream & Downstream Barriers
A501	4	6'-11"	" " "
A502	4	5'-11"	" " "
A503	4	6'-1"	" " "

Reinforcing Bar: ASTM A615 Grade 60
All reinforcing bars are size #5
All dimensions are out to out of reinforcing bar
Bending details and hooks shall conform to the recommendations of ACI Standard 315-65.



F.R.W.A. NO.	STATE	PROJECT NUMBER	SHEET NO.	TOTAL SHEETS
1	MAINE	FG-01-1(55)	22	73

GENERAL NOTES

- The Contractor shall maintain two-way traffic at all times.
- Each existing bridge rail post is reinforced with 4 vertical #6 bars which are to remain in place and bent as directed by the Engineer.
- Chamfer all exposed edges of concrete a consistent dimension between 1/2" and 3/4" inclusive, unless otherwise indicated.
- Reinforcing steel shall have 2" cover unless otherwise indicated.
- Protective Coating for Concrete Surfaces shall be applied to the following areas:
The entire surfaces of all new concrete.
- All deteriorated concrete in wings, fascias and beams shall be removed and repairs made as directed by the Engineer. Payment for all labor and equipment will be paid for under appropriate contract labor and equipment rental items, except that carpenters, cement masons and foreman will be paid for at 1 1/2 times the contract bid price for labor. Materials will be paid for under force account in accordance with Subsection 109.04 of the Specifications.

Plans of the existing bridge are available for the Contractor's reference at the Bridge Design Office in Augusta. The plans are reproductions of original drawings as prepared for the construction of the bridge and it is very unlikely that the plans will show any construction field changes or any alterations which may have been made to the bridge during its life span.

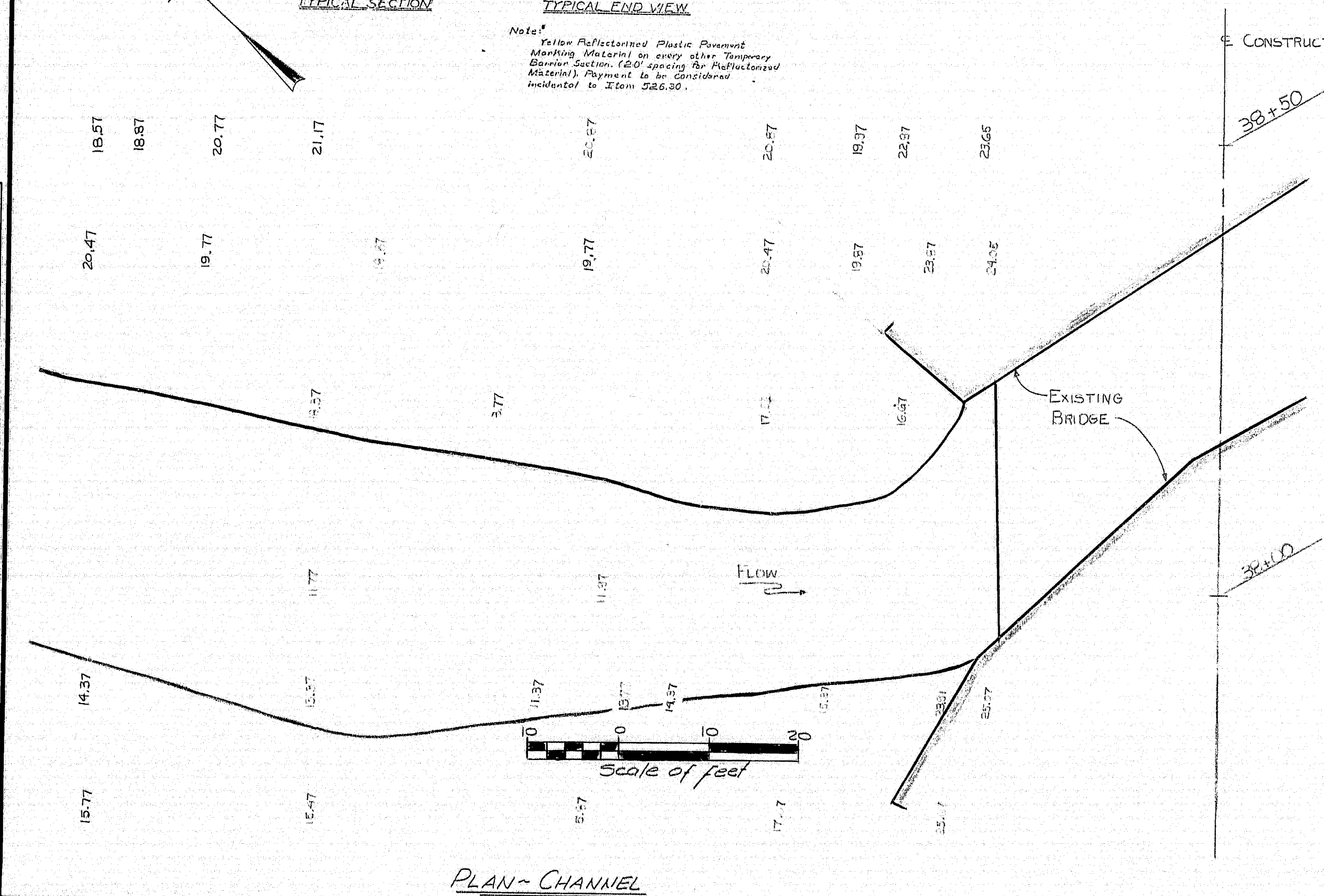
STATE OF MAINE
DEPARTMENT OF TRANSPORTATION

CAPELL BRIDGE
OVER
MERRILAND RIVER
IN THE TOWN OF
WELLS
YORK COUNTY
DETAILS

SHEET 1 OF 2 AUGUSTA, MAINE Sept. 1960
WELLS FG-01-1(55) R72.1

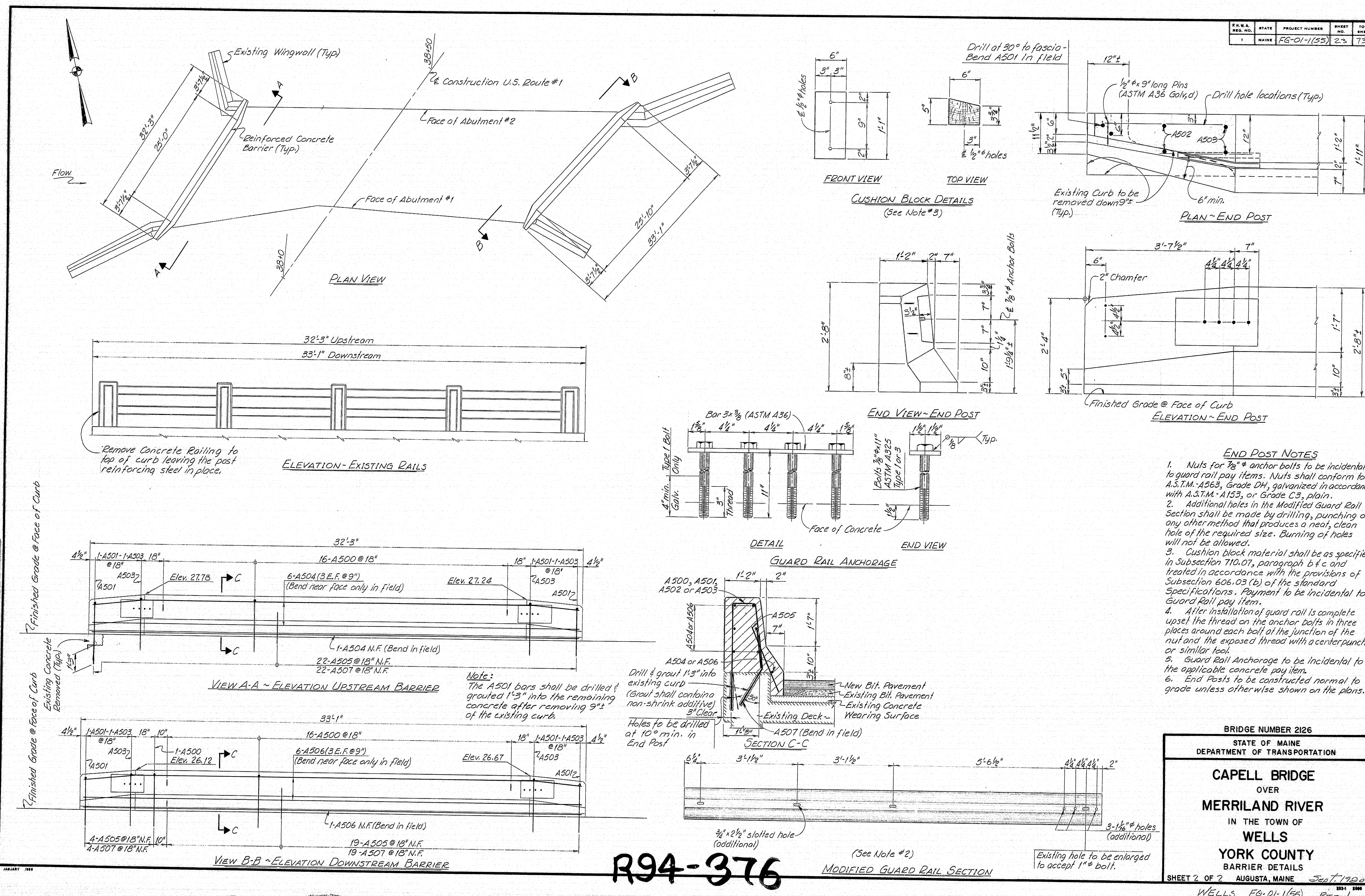
R94-375

PROJECT DESIGN ENGINEER	BY	DATE
DESIGN - DETAILED	WZL	8/1/60
CHECKED	ECB	8/1/60
REVISIONS	PLM	8/1/60
FIELD CHANGES		



PLAN - CHANNEL

F.H.W.A. REQ. NO.	STATE	PROJECT NUMBER	SHEET NO.	TO SHEET
1	MAINE	FG-01-1(55)	23	73



PLANS	PROJECT DESIGN ENGINEER		BY	DATE
	DESIGN - DETAILED		<i>P.C.B.</i>	<i>4-80</i>
	CHECKED		<i>PJM</i>	<i>8-80</i>
	REVISIONS			
	FIELD CHANGES			

~~R94-376~~

(See Note #2)

MODIFIED GUARD RAIL SECTION

BRIDGE NUMBER 2126

STATE OF MAINE
DEPARTMENT OF TRANSPORTATION

CAPELL BRIDGE
OVER
MERRILLAND RIVER
IN THE TOWN OF
WELLS
YORK COUNTY
BARRIER DETAILS

SHEET 2 OF 2 AUGUSTA, MAINE *Sept 1980*

WELLS FG-01-1555 RT.